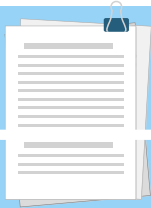


# Life of a Mail Ballot



## BALLOT CONTENT

Content submitted by jurisdictions and candidates is certified.



## BALLOT PACKET MAILED

22 days before the election ballots start being mailed to active registered voters.



## VOTING

Follow instructions, place voted ballot into envelope and sign.



## BALLOT SORTING

Envelopes are date stamped, weighed and the signature scanned.



## BALLOT PICK UP

Bipartisan teams of election judges secure & transport ballots to Elections Office.



## RETURN BALLOT

Secure 24-hour ballot drop boxes at convenient locations.



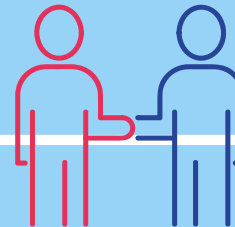
## SIGNATURE VERIFICATION

Ballots with signatures that match voter record proceed. If not verified voter is notified they must resolve discrepancy for ballot to proceed.



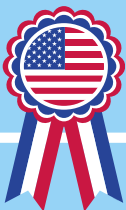
## ENVELOPE OPENING

Ballots are removed from envelope maintaining secrecy and prepared for counting.



## COUNTING & DUPLICATION

During counting ballots damaged or with unclear marks are reviewed by bipartisan teams and adjudicated.



## AUDIT/CERTIFICATION

Bipartisan judges audit and certify the election results as official. Voted ballots are stored 25 months.



## 8 DAYS POST ELECTION

Voters with ballot discrepancies must "cure" the issue. Military/overseas voters also have this time to return ballots.



## BALLOT RESULTS

Tabulations are kept on a secure network. First unofficial results are released at 7 p.m. Election Night.